

## Installation Instructions – Tall – Skinny – Deep Drawers

**Attention 1:** Each Drawer Unit **MUST** be attached with the included screws to the cabinet bottom or a permanently fixed shelf. Failure to attach will result in the Drawer Unit and its contents tipping and falling out when a drawer is extended.

**Attention 2:** If the cabinet shelf is adjustable, you **MUST** first secure the shelf to make it permanent with blocks of wood, brackets or clips (not-included). The contents you store on a shelf and the weight of the Drawer(s) can cause a shelf to bow and/or the whole shelf could tip when a drawer is extended and the shelf not secured permanently.

1) **Included:** Assembled Drawer Unit  
Elastic Bands (1 band for each set of empty notches)  
Mounting Screws (1 screw per base mounting hole)

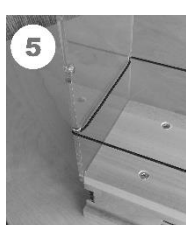
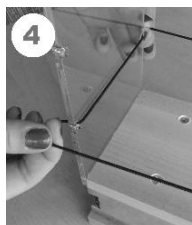
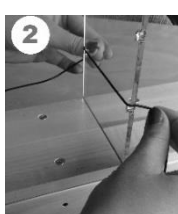
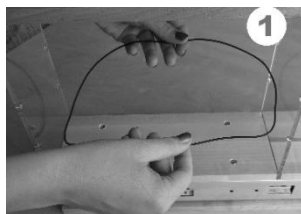
2) **Tools Needed:** Phillips Screwdriver

3) **Attach bands.**

**ONE BAND DOES NOT FIT FROM FRONT TO BACK, TOO TIGHT!!**

- All bands in the kit should be used.
- Two bands per section (ie: 4x1x22 = 2 bands front section, 2 bands back section, 3x2x22 = 2 bands per top front section, 2 bands per top back section, 2 bands per bottom front, 2 bands per bottom back)
- Bands in center partition share notches.
- Lower section bands around little ears.

Reference the Band Install Video on our website at [www.VerticalSpice.com](http://www.VerticalSpice.com)



Center plastic holds front and back Bands >

5) **Mark Unit Position.**

Place a piece of tape or draw a line on the cabinet shelf next to the drawer base. This will help re-position the base if the assembly moves.

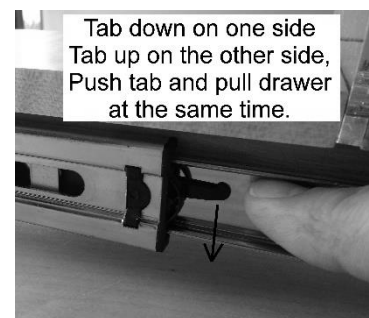


Place Tape or Draw a Line to Mark Location

6) There are **4 holes in each base**. A screw goes in each one.

7) **Remove drawers as needed.**

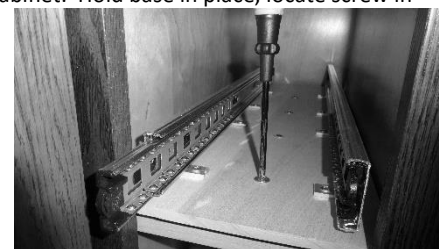
If you need access room, each drawer slide has a tab. Push it up or down (right side up, left side down) and push back on the slide. After both slides have been disconnected, pull the drawer out all the way.



Tab down on one side  
 Tab up on the other side,  
 Push tab and pull drawer at the same time.

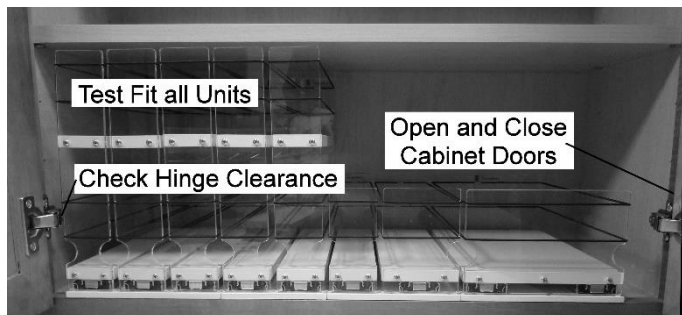
8) **Attach Unit Base to Cabinet.**

Realign base to marks on cabinet. Hold base in place, locate screw in one mounting hole (start with a front hole). Firmly press down with screw driver while turning. Turn screw into cabinet until snug. Repeat install of all screws.



4) **Create Space and Test Fit All Units.**

Remove spices, bottles and containers from your cabinet. Adjust the upper shelves to fit the unit, including space for your containers.



9) **Replace drawer.**

Align both slides and then push drawer completely back.



10) **Test Drawers.**

The slides should move smoothly and the drawer should not hit hinges, frames or doors. The drawer should not pull off the unit without pushing the tab. Push the bearing race forward if the drawer pulls off.

**What to Expect/Ongoing Care:**

- Clean-up spills with a soft cloth, water and mild detergent. Strong chemicals may crack the plastic.
- Use Petroleum Jelly (Vaseline) to lubricate moving parts in the slides as needed.
- The flexible bands allow over-sized containers on the shelves, you will have some rubbing in this case, but the drawers will still work.

Any questions, visit [www.VerticalSpice.com](http://www.VerticalSpice.com) for FAQ and more detailed installation instructions or contact Vertical Spice customer service at 612-254-2590.